

# No. 40

## 1/2" Pitch

# All Steel Stock Sprockets

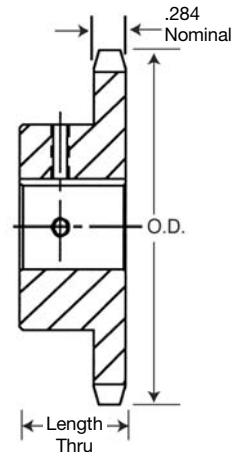
# Martin

### Single-Type "BS"— 2 Setscrews — Bored-To-Size

No. Teeth	Catalog Number	Outside Diameter	Length Thru Bore	Weight Lbs. (Approx.)	Stock Finished Bores Includes Keyway and 2 Setscrews
9	40BS9	1.670	3/8	.16	*1/2 - 3/8
10	40BS10	1.840	3/8	.24	*1/2 - 3/8 - 3/8
11	40BS11	2.000	3/8	.28	*1/2 - 3/8 - 3/8 - 3/8
12	40BS12	2.170	3/8	.34	*1/2 - 3/8 - 3/8 - 3/8 - 1
13	40BS13	2.330	3/8	.45	*1/2 - 3/8 - 3/8 - 3/8 - 1
14	40BS14	2.490	3/8	.51	*1/2 - 3/8 - 3/8 - 3/8 - 1 - 1/16
15	40BS15	2.650	3/8	.53	*1/2 - 3/8 - 3/8 - 3/8 - 1 - 1/16 - 1/16 - 1/16
16	40BS16	2.810	3/8	.66	3/8 - 3/8 - 3/8 - 1 - 1/16 - 1/16 - 1/16
17	40BS17	2.970	1	.88	3/8 - 3/8 - 3/8 - 1 - 1/16 - 1/16 - 1/16
18	40BS18	3.140	1	1.03	3/8 - 3/8 - 3/8 - 1 - 1/16 - 1/16 - 1/16 - 1/16 - 1/16 - 1/16
19	40BS19	3.300	1	1.17	3/8 - 3/8 - 3/8 - 1 - 1/16 - 1/16 - 1/16 - 1/16 - 1/16 - 1/16
20	40BS20	3.460	1	1.33	3/8 - 3/8 - 3/8 - 1 - 1/16 - 1/16 - 1/16 - 1/16 - 1/16 - 1/16
21	40BS21	3.620	1	1.53	3/8 - 3/8 - 3/8 - 1 - 1/16 - 1/16 - 1/16 - 1/16 - 1/16 - 1/16
22	40BS22	3.780	1	1.66	3/8 - 3/8 - 3/8 - 1 - 1/16 - 1/16 - 1/16 - 1/16 - 1/16 - 1/16
23	40BS23	3.940	1	1.92	3/8 - 3/8 - 3/8 - 1 - 1/16 - 1/16 - 1/16 - 1/16 - 1/16 - 1/16
24	40BS24	4.100	1	2.10	3/8 - 3/8 - 3/8 - 1 - 1/16 - 1/16 - 1/16 - 1/16 - 1/16 - 1/16
25	40BS25	4.260	1	2.22	3/8 - 3/8 - 3/8 - 1 - 1/16 - 1/16 - 1/16 - 1/16 - 1/16 - 1/16
26	40BS26	4.420	1	2.34	3/8 - 3/8 - 3/8 - 1 - 1/16 - 1/16 - 1/16 - 1/16 - 1/16 - 1/16
27	40BS27	4.580	1	2.42	3/8 - 3/8 - 3/8 - 1 - 1/16 - 1/16 - 1/16 - 1/16 - 1/16 - 1/16
28	40BS28	4.740	1	2.50	3/8 - 3/8 - 3/8 - 1 - 1/16 - 1/16 - 1/16 - 1/16 - 1/16 - 1/16
29	40BS29	4.900	1	2.60	3/8 - 3/8 - 3/8 - 1 - 1/16 - 1/16 - 1/16 - 1/16 - 1/16 - 1/16
30	40BS30	5.060	1	2.70	3/8 - 3/8 - 3/8 - 1 - 1/16 - 1/16 - 1/16 - 1/16 - 1/16 - 1/16
31	40BS31	5.220	1	2.88	3/8 - 3/8 - 3/8 - 1 - 1/16 - 1/16 - 1/16 - 1/16 - 1/16 - 1/16
32	40BS32	5.380	1	3.00	3/8 - 3/8 - 3/8 - 1 - 1/16 - 1/16 - 1/16 - 1/16 - 1/16 - 1/16
33	40BS33	5.540	1	3.03	3/8 - 3/8 - 3/8 - 1 - 1/16 - 1/16 - 1/16 - 1/16 - 1/16 - 1/16
34	40BS34	5.700	1	3.11	3/8 - 3/8 - 3/8 - 1 - 1/16 - 1/16 - 1/16 - 1/16 - 1/16 - 1/16
35	40BS35	5.860	1	3.20	3/8 - 3/8 - 3/8 - 1 - 1/16 - 1/16 - 1/16 - 1/16 - 1/16 - 1/16
36	40BS36	6.020	1	3.39	3/8 - 3/8 - 3/8 - 1 - 1/16 - 1/16 - 1/16 - 1/16 - 1/16 - 1/16
37	40BS37	6.170	1	3.45	3/8 - 3/8 - 3/8 - 1 - 1/16 - 1/16 - 1/16 - 1/16 - 1/16 - 1/16
38	40BS38	6.330	1	3.50	3/8 - 3/8 - 3/8 - 1 - 1/16 - 1/16 - 1/16 - 1/16 - 1/16 - 1/16
39	40BS39	6.490	1	4.00	3/8 - 3/8 - 3/8 - 1 - 1/16 - 1/16 - 1/16 - 1/16 - 1/16 - 1/16
40	40BS40	6.650	1 1/8	4.28	3/8 - 3/8 - 3/8 - 1 - 1/16 - 1/16 - 1/16 - 1/16 - 1/16 - 1/16
41	40BS41	6.810	1 1/8	4.58	3/8 - 3/8 - 3/8 - 1 - 1/16 - 1/16 - 1/16 - 1/16 - 1/16 - 1/16
42	40BS42	6.970	1 1/8	4.64	3/8 - 3/8 - 3/8 - 1 - 1/16 - 1/16 - 1/16 - 1/16 - 1/16 - 1/16
43	40BS43	7.130	1 1/8	4.80	3/8 - 3/8 - 3/8 - 1 - 1/16 - 1/16 - 1/16 - 1/16 - 1/16 - 1/16
44	40BS44	7.290	1 1/8	4.96	3/8 - 3/8 - 3/8 - 1 - 1/16 - 1/16 - 1/16 - 1/16 - 1/16 - 1/16
45	40BS45	7.450	1 1/8	5.06	3/8 - 3/8 - 3/8 - 1 - 1/16 - 1/16 - 1/16 - 1/16 - 1/16 - 1/16
46	40BS46	7.610	1 1/8	5.19	3/8 - 3/8 - 3/8 - 1 - 1/16 - 1/16 - 1/16 - 1/16 - 1/16 - 1/16
47	40BS47	7.770	1 1/8	5.26	3/8 - 3/8 - 3/8 - 1 - 1/16 - 1/16 - 1/16 - 1/16 - 1/16 - 1/16
48	40BS48	7.930	1 1/8	5.66	3/8 - 3/8 - 3/8 - 1 - 1/16 - 1/16 - 1/16 - 1/16 - 1/16 - 1/16
49	40BS49	8.090	1 1/8	5.72	3/8 - 3/8 - 3/8 - 1 - 1/16 - 1/16 - 1/16 - 1/16 - 1/16 - 1/16
50	40BS50	8.250	1 1/8	5.78	3/8 - 3/8 - 3/8 - 1 - 1/16 - 1/16 - 1/16 - 1/16 - 1/16 - 1/16
51	40BS51	8.410	1 1/8	5.90	3/8 - 3/8 - 3/8 - 1 - 1/16 - 1/16 - 1/16 - 1/16 - 1/16 - 1/16
52	40BS52	8.570	1 1/8	5.94	3/8 - 3/8 - 3/8 - 1 - 1/16 - 1/16 - 1/16 - 1/16 - 1/16 - 1/16
53	40BS53	8.730	1 1/8	6.12	3/8 - 3/8 - 3/8 - 1 - 1/16 - 1/16 - 1/16 - 1/16 - 1/16 - 1/16
54	40BS54	8.880	1 1/8	6.24	3/8 - 3/8 - 3/8 - 1 - 1/16 - 1/16 - 1/16 - 1/16 - 1/16 - 1/16
55	40BS55	9.040	1 1/8	6.66	3/8 - 3/8 - 3/8 - 1 - 1/16 - 1/16 - 1/16 - 1/16 - 1/16 - 1/16
56	40BS56	9.200	1 1/8	6.71	3/8 - 3/8 - 3/8 - 1 - 1/16 - 1/16 - 1/16 - 1/16 - 1/16 - 1/16
57	40BS57	9.360	1 1/8	6.94	3/8 - 3/8 - 3/8 - 1 - 1/16 - 1/16 - 1/16 - 1/16 - 1/16 - 1/16
58	40BS58	9.520	1 1/8	7.17	3/8 - 3/8 - 3/8 - 1 - 1/16 - 1/16 - 1/16 - 1/16 - 1/16 - 1/16
59	40BS59	9.680	1 1/8	7.38	3/8 - 3/8 - 3/8 - 1 - 1/16 - 1/16 - 1/16 - 1/16 - 1/16 - 1/16
60	40BS60	9.840	1 1/8	7.68	3/8 - 3/8 - 3/8 - 1 - 1/16 - 1/16 - 1/16 - 1/16 - 1/16 - 1/16
70	40BS70	11.430	1 1/2	10.80	3/8 - 3/8 - 3/8 - 1 - 1/16 - 1/16 - 1/16 - 1/16 - 1/16 - 1/16
72	40BS72	11.750	1 1/2	11.30	3/8 - 3/8 - 3/8 - 1 - 1/16 - 1/16 - 1/16 - 1/16 - 1/16 - 1/16
80	40BS80	13.030	1 1/2	13.20	3/8 - 3/8 - 3/8 - 1 - 1/16 - 1/16 - 1/16 - 1/16 - 1/16 - 1/16
84	40BS84	13.660	1 1/2	13.84	3/8 - 3/8 - 3/8 - 1 - 1/16 - 1/16 - 1/16 - 1/16 - 1/16 - 1/16
96	40BS96	15.570	1 1/2	17.44	3/8 - 3/8 - 3/8 - 1 - 1/16 - 1/16 - 1/16 - 1/16 - 1/16 - 1/16
112	40BS112	18.120	1 1/2	22.45	3/8 - 3/8 - 3/8 - 1 - 1/16 - 1/16 - 1/16 - 1/16 - 1/16 - 1/16



**BORED-TO-SIZE**



**TYPE BS**

\*Indicates no keyway.  
 (2) 1/4" setscrews only.  
 Hub diameters vary to suit different bore sizes.

NOTE: KEYWAY IS ON CENTER LINE OF TOOTH.

# No. 40

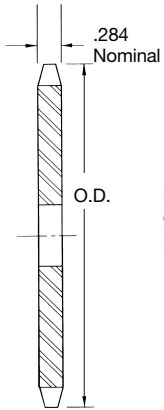
## 1/2" Pitch

# All Steel Stock Sprockets

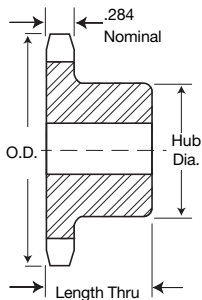
# Martin

### Single-Type B

### Single-Type A



TYPE A



TYPE B

No. Teeth	Catalog Number	Outside Diameter	Type	Bore (inches)		Hub (inches)		Weight Lbs (Approx.)	Type	Catalog Number	Stock Bore	Weight Lbs. (Approx.)
				Stock	Rec. Max.	Diameter	Length Thru					
8	40B8	1.510	B	1/2	1/2	3/32*	7/8	.18				
9	40B9	1.670	B	1/2	5/8	1 1/16*	7/8	.20				
10	40B10	1.840	B	1/2	3/4	1 1/8*	7/8	.27				
11	40B11	2.000	B	1/2	7/8	1 3/8*	7/8	.35				
12	40B12	2.170	B	1/2	1	1 1/2*	7/8	.45	A	40A12	1/2	.18
13	40B13	2.330	B	1/2	1 1/8	1 5/8	7/8	.50	A	40A13	1/2	.22
14	40B14	2.490	B	1/2	1 1/4	1 7/8	7/8	.59	A	40A14	1/2	.26
15	40B15	2.650	B	1/2	1 1/2	2	7/8	.70	A	40A15	1/2	.30
16	40B16	2.810	B	5/8	1 1/4	2	1	.79	A	40A16	5/8	.34
17	40B17	2.980	B	5/8	1 1/2	2 1/8	1	1.04	A	40A17	5/8	.36
18	40B18	3.140	B	5/8	1 3/4	2 3/8	1	1.22	A	40A18	5/8	.44
19	40B19	3.300	B	5/8	2	2 1/2	1	1.43	A	40A19	5/8	.46
20	40B20	3.460	B	5/8	2 1/8	2 3/4	1	1.56	A	40A20	5/8	.56
21	40B21	3.620	B	5/8	2 1/4	3	1	1.73	A	40A21	5/8	.58
22	40B22	3.780	B	5/8	2 1/2	3 1/8	1	1.96	A	40A22	5/8	.66
23	40B23	3.940	B	5/8	2 3/4	3 1/4	1	2.13	A	40A23	5/8	.72
24	40B24	4.100	B	5/8	3	3 1/2	1	2.41	A	40A24	5/8	.82
25	40B25	4.260	B	5/8	3 1/8	3 3/4	1	2.54	A	40A25	5/8	.88
26	40B26	4.420	B	5/8	3 1/4	3 3/4	1	2.58	A	40A26	5/8	.94
27	40B27	4.580	B	5/8	3 1/2	3 3/4	1	2.66	A	40A27	5/8	.98
28	40B28	4.740	B	5/8	3 3/8	3 3/4	1	2.73	A	40A28	5/8	1.10
29	40B29	4.900	B	5/8	3 1/2	3 3/4	1	2.80	A	40A29	19/32	1.22
30	40B30	5.060	B	5/8	3 3/4	3 3/4	1	2.98	A	40A30	19/32	1.26
31	40B31	5.220	B	5/8	4	3 3/4	1	3.10	A	40A31	19/32	1.40
32	40B32	5.380	B	5/8	4 1/8	3 3/4	1	3.16	A	40A32	19/32	1.48
33	40B33	5.540	B	5/8	4 1/4	3 3/4	1	3.22	A	40A33	19/32	1.56
34	40B34	5.700	B	5/8	4 1/2	3 3/4	1	3.30	A	40A34	19/32	1.64
35	40B35	5.860	B	5/8	4 3/4	3 3/4	1	3.46	A	40A35	19/32	1.70
36	40B36	6.020	B	5/8	5	3 3/4	1	3.58	A	40A36	19/32	1.84
37	40B37	6.180	B	5/8	5 1/8	3 3/4	1	3.62	A	40A37	19/32	1.92
38	40B38	6.330	B	5/8	5 1/4	3 3/4	1	3.70	A	40A38	19/32	2.00
39	40B39	6.490	B	5/8	5 1/2	3 3/4	1	3.76	A	40A39	19/32	2.02
40	40B40	6.650	B	5/8	5 3/4	3 3/4	1 1/8	4.69	A	40A40	23/32	2.22
41	40B41	6.810	B	5/8	6	3 3/4	1 1/8	4.76	A	40A41	23/32	2.42
42	40B42	6.970	B	5/8	6 1/8	3 3/4	1 1/8	4.82	A	40A42	23/32	2.50
43	40B43	7.130	B	5/8	6 1/4	3 3/4	1 1/8	5.12	A	40A43	23/32	2.80
44	40B44	7.290	B	5/8	6 1/2	3 3/4	1 1/8	5.15	A	40A44	23/32	2.85
45	40B45	7.450	B	5/8	6 3/4	3 3/4	1 1/8	5.30	A	40A45	23/32	3.15
46	40B46	7.610	B	5/8	7	3 3/4	1 1/8	5.57	A	40A46	23/32	3.26
47	40B47	7.770	B	5/8	7 1/8	3 3/4	1 1/8	5.44	A	40A47	23/32	3.32
48	40B48	7.930	B	5/8	7 1/4	3 3/4	1 1/8	5.84	A	40A48	23/32	3.22
49	40B49	8.090	B	5/8	7 1/2	3 3/4	1 1/8	5.90	A	40A49	23/32	3.44
50	40B50	8.250	B	5/8	7 3/4	3 3/4	1 1/8	5.96	A	40A50	23/32	3.62
51	40B51	8.410	B	5/8	8	3 3/4	1 1/8	6.08	A	40A51	23/32	3.94
52	40B52	8.570	B	5/8	8 1/8	3 3/4	1 1/8	6.28	A	40A52	23/32	4.08
53	40B53	8.730	B	5/8	8 1/4	3 3/4	1 1/8	6.33	A	40A53	23/32	4.04
54	40B54	8.890	B	5/8	8 1/2	3 3/4	1 1/8	6.42	A	40A54	23/32	4.44
55	40B55	9.040	B	5/8	8 3/4	3 3/4	1 1/8	6.46	A	40A55	23/32	4.54
56	40B56	9.200	B	5/8	9	3 3/4	1 1/8	6.89	A	40A56	23/32	4.84
57	40B57	9.360	B	5/8	9 1/8	3 3/4	1 1/8	7.02	A	40A57	23/32	5.00
58	40B58	9.520	B	5/8	9 1/4	3 3/4	1 1/8	7.36	A	40A58	23/32	5.12
59	40B59	9.680	B	5/8	9 1/2	3 3/4	1 1/8	7.45	A	40A59	23/32	5.30
60	40B60	9.840	B	5/8	9 3/4	3 3/4	1 1/8	7.86	A	40A60	23/32	5.48
70	40B70	11.430	B	5/8	11	4	1 1/4	11.00	A	40A70	23/32	7.24
72	40B72	11.750	B	5/8	11 1/4	4	1 1/4	11.50	A	40A72	23/32	7.74
80	40B80	13.030	B	5/8	13	4	1 1/4	13.40	A	40A80	23/32	10.20
84	40B84	13.660	B	5/8	14	4	1 1/4	14.04	A	40A84	23/32	10.07
96	40B96	15.570	B	1	16	4	1 1/4	17.56	A	40A96	1 1/8	12.15
112	40B112	18.120	B	1	18	4	1 1/4	22.56	A	40A112	1 1/8	20.00

\* Has recessed groove in hub for chain clearance.

Maximum bores shown will accommodate standard keyseat and setscrew over keyseat. Slightly larger bores are possible with no keyseat, shallow keyseat, or setscrew at angle to keyseat.

#### Alteration Charges

See current discount sheet for alteration charges.